

# Crystal Chain

Designed by the Funkster herself!  
Color combination by Denise Uttke.  
as shown in BeadStyle and Bead & Button



## Supplies needed

(Kits available at [www.funkyhannahs.com](http://www.funkyhannahs.com))

I have listed two quantities depending on the size of your wrist. You can make additional adjustments in size by adding more 4mm bicone crystals.

### Average/Large, 8 1/2" bracelet:

22 6mm Swarovski crystal cubes  
60 4mm Swarovski crystal bicones

### Average/Small, 7 1/4" bracelet:

19 6mm Swarovski crystal cubes  
52 4mm Swarovski crystal bicones

### Either size bracelet requires:

One color Japanese seed beads  
(don't need a whole tube)

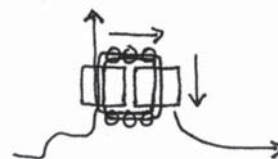
Fireline, fine

Size 12 needles

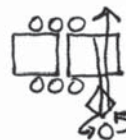
Start with LOADS of fireline (4 yards) and thread size 12 needle. To manage this much thread, we are going to leave 2 yards of fireline as the tail and build the bracelet from the middle - out... You'll see! It is a great way to build a symmetrical bracelet that takes a lot of thread!

### 1) Making the LINK

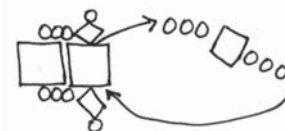
Pick up 1 cube, 3 seed beads, 1 cube, 3 seed beads and go back into 1st cube where the tail is exiting the bead. Pull tight and the beads will form a circle. Bring your needle through all these same beads again to tighten.



With needle coming out of a cube, add 1 crystal bicone, a size 11° seed bead and go back down into bicone and crystal cube. Repeat on opposite side of cube.

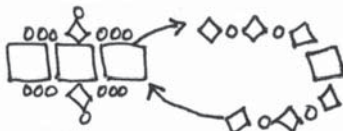


With needle coming out of the cube, add 3 seed beads, 1 cube and 3 seed beads. Go back into middle cube opposite hole from where the thread is coming out. Run needle and thread through this same newly added beads again to secure.



### 2) Making the CHAIN

Position needle exiting the last cube you put on. Add bicone, seed bead, bicone, seed bead, bicone, Cube, bicone, seed bead, bicone, seed bead, bicone, seed bead, bicone and stitch back into the cube your thread is coming out of, only the opposite hole. The beads will form a circle. Run your needle and thread through this new grouping of beads to tighten and secure.



Now to embellish this chain...with needle exiting cube, add 3 seed beads and stitch into the 1st seed bead separating bicones in the base of the chain. Continue to add 3 seed beads and stitch into the next seed bead in the base, repeating this all the way around the chain element so that each bicone has a arch of seed beads above it.



324 Main Street, Racine, WI 262-634-6088

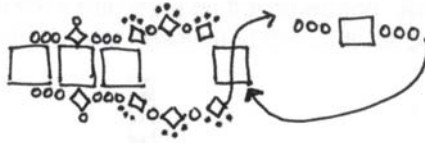
[funkyhannahs.com](http://funkyhannahs.com)

©Funky Hannah's Beads & Art Racine, WI

# Crystal Chain continued

### 3) To Add Links

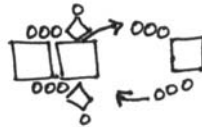
Position needle coming out of end cube. This cube will be the first one in your link. Add 3 seed beads, 1 cube, 3 seed beads and stitch back into the base cube, opposite hole from where the thread is coming out. Stitch through these beads again to secure.



With needle coming out of a cube, add 1 crystal bicone, a size 11 seed bead and go back down into bicone and crystal cube. Repeat on opposite side of cube.



With needle coming out of the cube, add 3 seed beads, 1 cube and 3 seed beads. Go back into middle cube opposite hole from where the thread is coming out. Run needle and thread through this same newly added beads again to secure.



Continue making the chain following #2 above and add links following #3. When you start running short on thread, switch your needle to your long tail thread and work from that end of the bracelet.

### Adding & Ending Thread

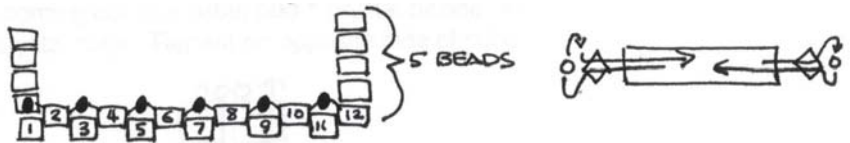
If you are running low on thread on both ends, you will have to add more thread by weaving away the old thread back into the work and weave in a new thread. You may use a knot within your work if you are more comfortable knowing there is a knot. The best spot to position a knot is on a cube in a chain section.

- Determine Your Bracelet Length:
- 7" bracelet is made with 6 chain and 6 link sections.
  - 7 1/2" bracelet is made with 7 chain and 6 link sections.
  - 8" bracelet is made with 7 chain and 7 link sections.

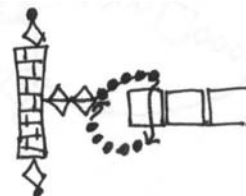
### Adding Your Clasp

You will make a beaded toggle that will loop into the last chain in your bracelet. It is very cool! If you have an end of your bracelet that finishes with a link section, you will stitch your toggle bar to this end.

Make a peyote bead 12 beads wide and 5 beads up on each side. Zip the peyote bead together. To embellish the ends of your peyote bead, bring your needle down the middle of the peyote tube and add a bicone and seed bead. Stitch back through just the bicone and into the peyote tube, ready to do the same thing on the other end. Add a bicone and seed bead, stitch through just bicone. Repeat running your needle and thread through both embellishment beads to add strength.



Weave your needle and thread through the beads in the peyote bead and pop out between rows 6 & 7... this is the middle of the peyote bead. Add 2 bicones, 5 seed beads and stitch into the end cube of the bracelet. Add 5 more seed beads and stitch back up through the 2 bicones you added earlier. Stitch into a bead of the peyote toggle and run your needle and thread back through all the beads you just put on to secure. Do this same thing again so you have 3 thread passes holding the toggle in place. Weave away the thread and you are finished! Wear & enjoy!!!



324 Main Street, Racine, WI 262-634-6088

[funkyhannahs.com](http://funkyhannahs.com)

©Funky Hannah's Beads & Art Racine, WI

©Amanda Cosgrove Paffrath, Funky Hannah's 2005

page 2